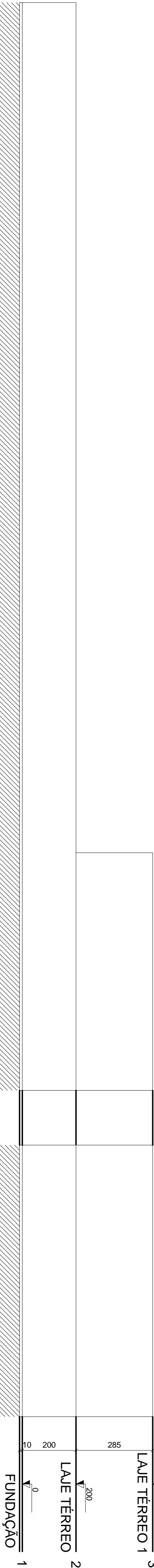
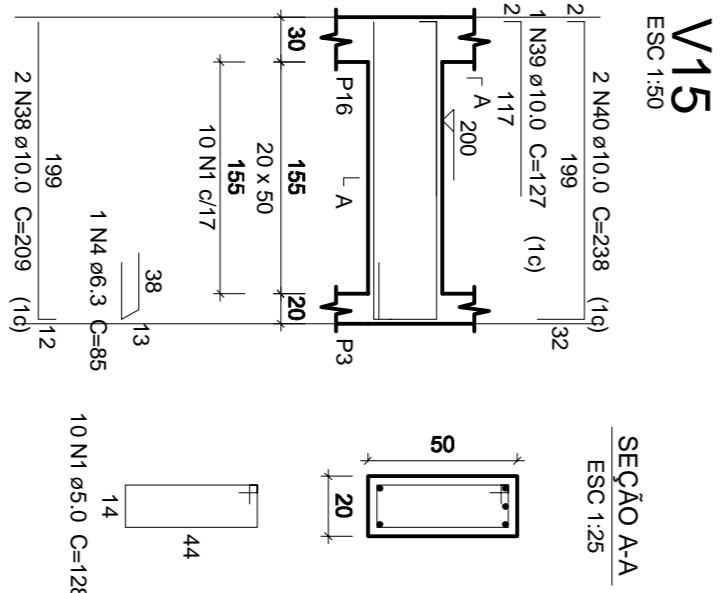
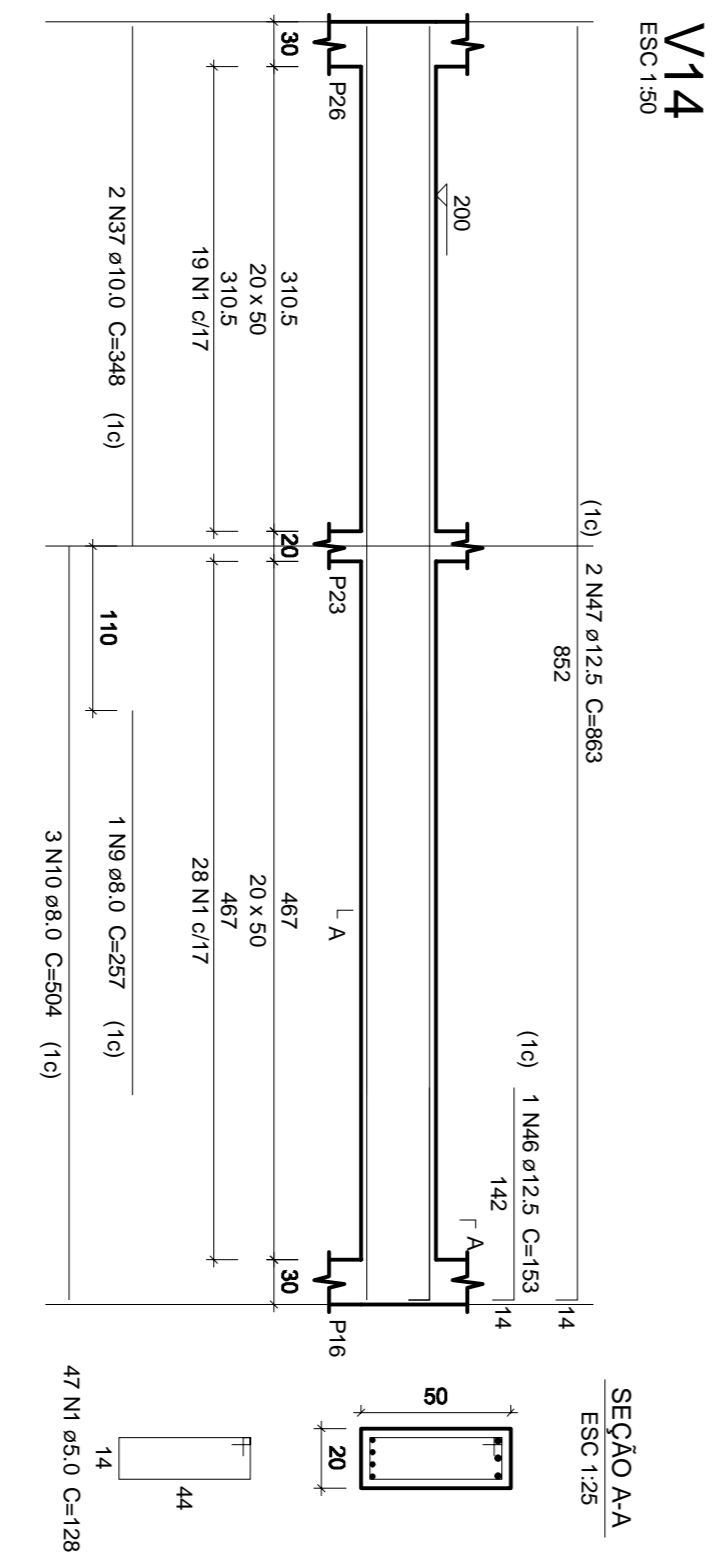


ACO	N	DIAM (mm)	QUANT	CUNIT (cm)	C-TOTAL	
CABO	1	5.0	425	128	5580	
	3	5.0	1250	384	15840	
	5	5.0	2083	640	26112	
	10	5.0	4167	1280	52224	
	15	5.0	6250	1920	78336	
	20	5.0	8333	2560	104448	
	25	5.0	10417	3200	130560	
	30	5.0	12500	3840	156672	
	35	5.0	14583	4480	182784	
	40	5.0	16667	5120	208896	
	CABO	1	6.3	555	85	555
		3	6.3	1665	255	1665
		5	6.3	2775	415	2775
		6	6.3	3330	500	3330
		8	6.3	4440	667	4440
9		6.3	5000	750	5000	
10		6.3	5555	833	5555	
11		6.3	6110	917	6110	
12		6.3	6665	1000	6665	
14		6.3	8330	1277	8330	
CABO		1	8.0	700	110	770
		3	8.0	2100	330	2220
		6	8.0	4200	660	4440
		8	8.0	5600	880	5880
		9	8.0	6300	990	6660
	10	8.0	7000	1100	7330	
	11	8.0	7700	1210	8010	
	12	8.0	8400	1320	8680	
	14	8.0	10500	1650	10880	
	15	8.0	11200	1760	11550	
	CABO	1	10.0	800	120	960
		3	10.0	2400	360	2880
		6	10.0	4800	720	5760
		8	10.0	6400	960	7840
		9	10.0	7200	1080	8640
10		10.0	8000	1200	9600	
11		10.0	8800	1320	10560	
12		10.0	9600	1440	11520	
14		10.0	12800	1920	15360	
15		10.0	13600	2040	16320	
CABO		1	12.5	1000	150	1125
		3	12.5	3000	450	3375
		6	12.5	6000	900	6750
		8	12.5	8000	1200	9000
		9	12.5	9000	1350	10125
	10	12.5	10000	1500	11250	
	11	12.5	11000	1650	12375	
	12	12.5	12000	1800	13500	
	14	12.5	16000	2400	18000	
	15	12.5	17000	2550	19125	
	CABO	1	15.0	1200	180	1350
		3	15.0	3600	540	3960
		6	15.0	7200	1080	7920
		8	15.0	9600	1440	10560
		9	15.0	10800	1620	11700
10		15.0	12000	1800	12900	
11		15.0	13200	1980	14040	
12		15.0	14400	2160	15180	
14		15.0	19200	2880	20160	
15		15.0	20400	3060	21300	
CABO		1	16.0	1280	192	1328
		3	16.0	3840	576	4032
		6	16.0	7680	1152	8064
		8	16.0	10240	1536	10752
		9	16.0	11520	1728	12096
	10	16.0	12800	1920	13440	
	11	16.0	14080	2112	14784	
	12	16.0	15360	2304	16128	
	14	16.0	20480	3072	21696	
	15	16.0	21760	3264	23040	
	CABO	1	17.0	1360	204	1428
		3	17.0	4080	612	4284
		6	17.0	8160	1224	8568
		8	17.0	10880	1632	11552
		9	17.0	12240	1836	12816
10		17.0	13600	2040	14080	
11		17.0	14960	2244	15344	
12		17.0	16320	2448	16608	
14		17.0	21760	3264	22176	
15		17.0	23120	3472	23664	
CABO		1	18.0	1440	216	1512
		3	18.0	4320	648	4608
		6	18.0	8640	1296	9216
		8	18.0	11520	1728	12288
		9	18.0	12960	1944	13752
	10	18.0	14400	2160	15120	
	11	18.0	15840	2376	16512	
	12	18.0	17280	2592	17904	
	14	18.0	23040	3456	24192	
	15	18.0	24480	3672	25584	
	CABO	1	20.0	1600	240	1920
		3	20.0	4800	720	5760
		6	20.0	9600	1440	11520
		8	20.0	12800	1920	15360
		9	20.0	14400	2160	17280
10		20.0	16000	2400	19200	
11		20.0	17600	2640	21120	
12		20.0	19200	2880	23040	
14		20.0	25600	3840	30720	
15		20.0	27200	4080	32640	
CABO		1	22.5	1800	270	2025
		3	22.5	5400	810	6075
		6	22.5	10800	1620	12150
		8	22.5	14400	2160	16200
		9	22.5	16200	2430	18525
	10	22.5	18000	2700	20700	
	11	22.5	19800	2970	22875	
	12	22.5	21600	3240	25050	
	14	22.5	28800	4320	33600	
	15	22.5	30600	4590	35775	
	CABO	1	25.0	2000	300	2250
		3	25.0	6000	900	6750
		6	25.0	12000	1800	13500
		8	25.0	16000	2400	18000
		9	25.0	18000	2700	20250
10		25.0	20000	3000	22500	
11		25.0	22000	3300	24750	
12		25.0	24000	3600	27000	
14		25.0	32000	4800	36000	
15		25.0	34000	5100	38250	
CABO		1	27.5	2200	330	2475
		3	27.5	6600	990	7425
		6	27.5	13200	1980	14850
		8	27.5	17600	2640	19800
		9	27.5	19800	2970	22275
	10	27.5	22000	3300	24750	
	11	27.5	24200	3630	27225	
	12	27.5	26400	3960	29700	
	14	27.5	35200	5280	40320	
	15	27.5	37400	5610	42675	
	CABO	1	30.0	2400	360	2700
		3	30.0	7200	1080	8100
		6	30.0	14400	2160	16200
		8	30.0	19200	2880	21600
		9	30.0	21600	3240	24300
10		30.0	24000	3600	27000	
11		30.0	26400	3960	29700	
12		30.0	28800	4320	32400	
14		30.0	38400	5760	43200	
15		30.0	40800	6120	45900	
CABO		1	32.5	2600	390	2925
		3	32.5	7800	1170	8775
		6	32.5	15600	2340	17550
		8	32.5	20800	3120	23200
		9	32.5	23000	3510	25725
	10	32.5	26000	3900	29250	
	11	32.5	28200	4290	31775	
	12	32.5	30400	4680	34300	
	14	32.5	40800	6240	46080	
	15	32.5	43000	6630	48525	
	CABO	1	35.0	2800	420	3150
		3	35.0	8400	1260	9450
		6	35.0	16800	2520	18900
		8	35.0	22400	3360	25500
		9	35.0	25200	3780	29025
10		35.0	28000	4200	31500	
11		35.0	30800	4620	34025	
12		35.0	33600	5040	36500	
14		35.0	44800	6720	48960	
15		35.0	47000	7110	51425	
CABO		1	37.5	3000	450	3375
		3	37.5	9000	1350	10125
		6	37.5	18000	2700	20250
		8	37.5	24000	3600	27000
		9	37.5	27000	4050	30375
	10	37.5	30000	4500	33750	
	11	37.5	33000	4950	37125	
	12	37.5	36000	5400	40500	
	14	37.5	48000	7200	54000	
	15	37.5	50000	7650	56625	
	CABO	1	40.0	3200	480	3600
		3	40.0	9600	1440	10800
		6	40.0	19200	2880	21600
		8	40.0	25600	3840	28800
		9	40.0	28800	4320	32400
10		40.0	32000	4800	36000	
11		40.0	35200	5280	39600	
12		40.0	38400	5760	43200	
14		40.0	51200	7680	58240	
15		40.0	54400	8160	61760	
CABO		1	42.5	3400	510	3825
		3	42.5	10200	1530	11475
		6	42.5	20400	3060	22950
		8	42.5	27200	4080	30720
		9	42.5	30600	4590	34275
	10	42.5	34000	5100	38250	
	11	42.5	37400	5610	41725	
	12	42.5	40800	6120	45180	
	14	42.5	54400	8160	59920	
	15	42.5	57800	8670	63375	
	CABO	1	45.0	3600	540	4050
		3	45.0	10800	1620	12150
		6	45.0	21600	3240	24300
		8	45.0	28800	4320	32400
		9	45.0	32400	4950	36675
10		45.0	36000	5400	40500	
11		45.0	39600	5940	44250	
12		45.0	43200	6480	48000	
14		45.0	57600	8640	63360	
15		45.0	60000	9000	65250	
CABO		1	47.5	3800	570	4275
		3	47.5	11400	1710	12825
		6	47.5	22800	3420	25650
		8	47.5	30400	4560	33760
		9	47.5	34200	5130	38025
	10	47.5	38000	5700	42300	
	11	47.5	41800	6270	46575	
	12	47.5	45600	6840	50840	
	14	47.5	60800	9120	67040	
	15	47.5	64000	9600	70200	

AÇO	DIAM (mm)	C TOTAL (m)	PESO + 10 % (kg)
CA50	6,3	2,6	0,7
	8,0	50,1	21,7
	10,0	261,2	177,1
	12,5	64,2	67,9
CA60	5,0	571,7	96,9
PESO TOTAL (kg)			
CA50	267,5		
CA60	96,9		

Volume de concreto (C-30) = 7,92 m³
 Área de forma = 95 m²

Volume de concreto (C-30) = 7.92 m³
Área de forma = 95 m²

[illegible]